

## HIGH FREQUENCY TRANSDUCER TEST SPECIFICATIONS

MODEL	TYPE OR	DIAPHRAGM	MAGNET	NOM	DYNAMIC TEST		DC RESISTANCE	NOTES
	THROAT SIZE	MATERIAL	TYPE	IMP SL	INPUT V	SWEEP FREQ HZ	MINIMUM-MAXIMUM	
010	1" Dome	Cloth	Ferrite	4	3	2K-12K	2.4-2.9	
011	1" Dome	Cloth	Ferrite	4	3	2K-12K	2.7-3.0	
024	1" Dome	Phenolic	Ferrite	8	5	200-1200	35-4.5	
033	1" Dome	Phenolic	Ferrite	8	5*	200-1200	3.6-4.4	*Test with network
034	1" Dome	Phenolic	Ferrite	8	2.5*	200-1200	5.4-6.6	*Test with network
035Ti	1" Dome	Titanium	Ferrite	8	2.5*	2K-12K	3.7-4.5	*Test with network
044	1" Dome	Phenolic	Ferrite	8	2*	2K-12K	5.1-6.6	*Test with network
044-1	1" Dome	Phenolic	Ferrite	8	2	2K-12K	5.4-6.6	Gold dome, black flange
044Ti	1" Dome	Titanium	Ferrite	8	1	*2K-12K	3.7-4.6	*Test with network
044Ti-1	1" Dome	Titanium	Ferrite	8	1*	2K-12K	3.7-4.6	*Test with network
066	1" Dome	Phenolic	Ferrite	8	5	*200-1200	3.5-4.4	*Test with network
LE20	1 3/4" Cone	Paper	Alnico	8	6*	1K-6K	3.7-4.2	*Test with network with dust screen
LE20-1	1 3/4" Cone	Paper	Alnico	8	6*	1K-6K	3.7-4.2	*Test with network
LE21H	1 3/4" Cone	Paper	Ferrite	8	3	500-1200	3.7-4.2	Has binding posts
LE25	1 3/4" Cone	Paper	Ferrite	8	3	500-1200	3.7-4.2	
LE25-1	1 3/4" Cone	Paper	Ferrite	8	3	500-1200	3.7-4.2	
LE25-2	1 3/4" Cone	Paper	Ferrite	8	3	500-1200	3.6-4.4	
LE25-3	1 3/4" Cone	Paper	Ferrite	8	3	500-1200	3.7-4.2	
LE25-4	1 3/4" Cone	Paper	Ferrite	8	3	500-1200	3.7-4.2	
LE25-5	1 3/4" Cone	Paper	Ferrite	8	3	500-1200	3.7-4.2	
LE261	3/4" Cone	Paper	Ferrite	8	3	500-1200	3.4-4.3	Plastic flange
LE30	3" Dome	Aluminum	Alnico	8	3	350-1200	5.4-6.6	
401-132	1 3/4" Cone	Paper	Alnico	8	6*	1K-3K	3.7-4.2	*Test with network, OEM
303G	2" Cone	Plastic	Ferrite	8	4*	1K-2K	3.6-4.4	*Test with network
303G-1	2" Cone	Paper	Ferrite	8	4*	1K-2K	3.6-4.4	*Test with network

## HIGH FREQUENCY TRANSDUCER TEST SPECIFICATIONS

MODEL	TYPE OR	DIAPHRAGM	MAGNET	NOM	DYNAMIC TEST		DC RESISTANCE	NOTES
	THROAT SIZE	MATERIAL	TYPE	IMP SL	INPUT V	SWEEP FREQ HZ	MINIMUM-MAXIMUM	
303G-2	2" Cone	Paper	Ferrite	8	4*	1K-2K	3.6-4.4	*Test with network
075	Integral horn	Aluminum	Alnico	8	7*	1K-3K	5.7-6.7	*Test with network
075R	Integral horn	Aluminum	Alnico	8	7*	1K-3K	5.7-6.7	*Test with network, OEM
075-022	Integral horn	Aluminum	Alnico	8	7*	1K-3K	5.7-6.7	*Test with network, motion detector
075-105	Integral horn	Aluminum	Alnico	8	7*	1K-3K	5.7-6.7	*Motion detector
075-105B	Integral horn	Aluminum	Alnico	8	7*	1K-3K	5.7-6.7	*Motion detector
075-105C	Integral horn	Aluminum	Alnico	8	7*	1K-3K	5.7-6.7	*Motion detector
075-105CH	Integral horn	Aluminum	Alnico	8	7*	1K-3K	5.7-6.7	*Motion detector
075-105D	Integral horn	Aluminum	Alnico	8	7*	1K-3K	5.7-6.7	*Motion detector
076	Integral horn	Aluminum	Alnico	16	7*	1K-3K	5.7-6.7	*Test with network
077	Integral horn	Aluminum	Alnico	16	7*	1K-3K	5.7-6.7	*Test with network
LE75	1"	Aluminum	Alnico	16	3.5	550-1200	5.9-7.0	
LE85	1"	Aluminum	Alnico	16	3.5	550-1200	5.9-7.0	
LE100S	1"	Phenolic	Alnico	16	3.5	350-1200	5.0-6.0	
LE175	1"	Aluminum	Alnico	16	3.5	550-1200	5.9-7.0	
LE175-200	1"	Aluminum	Alnico	16	3.5	550-1200	5.9-7.0	
LE175DLH	1"	Aluminum	Alnico	16	3.5	550-1200	5.9-7.0	
LE175HP	1"	Phenolic	Alnico	16	3.5	350-1200	5.9-7.0	
D175	1"	Aluminum	Alnico	16	3.5	550-1200	5.9-7.0	
175	1"	Aluminum	Alnico	16	3.5	550-1200	5.9-7.0	
275	1"	Aluminum	Alnico	16	3.5	550-1200	5.5-7.0	
375	2"	Aluminum	Alnico	16	3.5	350-1200	7.3-8.6	
375H	2"	Aluminum	Alnico	16	3.5	350-1200	7.3-8.6	
375AB	2"	Phenolic	Alnico	16	5	350-1200	5.8-6.9	No phasing plug
375EX	2"	Phenolic	Alnico	16	5	350-1200	5.8-6.9	No phasing plug

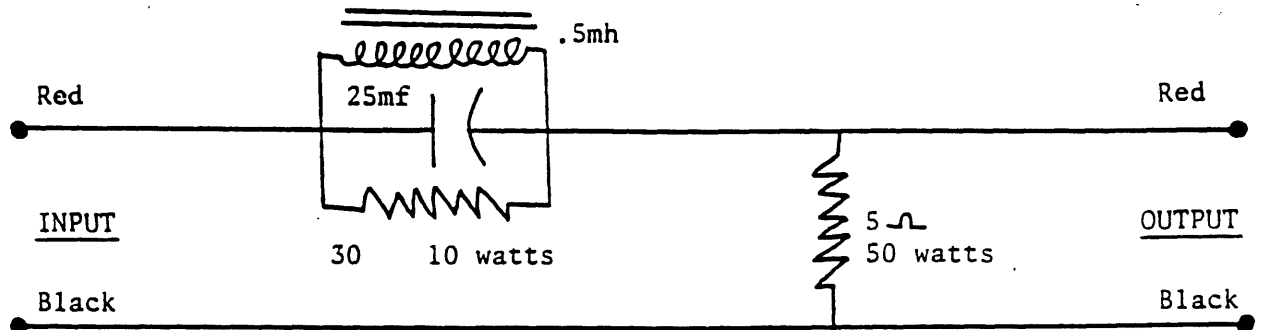
## HIGH FREQUENCY TRANSDUCER TEST SPECIFICATIONS

MODEL	TYPE OR	DIAPHRAGM	MAGNET	NOM	DYNAMIC TEST		DC RESISTANCE	NOTES
	THROAT SIZE	MATERIAL	TYPE	IMP SL	INPUT V	SWEEP FREQ HZ	MINIMUM-MAXIMUM	
375FH	2"	Phenolic	Alnico	16	5	350-1200	5.8-6.9	No phasing plug
375HP	2"	Phenolic	Alnico	16	5	350-1200	5.8-6.9	
376	2"	Aluminum	Alnico	16	3.	5350-1200	7.3-8.6	
2402	Integral horn	Aluminum	Alnico	8	7*	1K-3K	5.7-6.7	*Test with network
2402H	Integral horn	Aluminum	Ferrite	8	7*	1K-3K	5.7-6.7	*Test with network
2403	Integral horn	Aluminum	Alnico	16	7*	1K-3K	5.7-6.7	*Test with network
2403H	Integral horn	Aluminum	Ferrite	16	7*	1K-3K	5.7-6.7	*Test with network
2404H	Integral horn	Aluminum	Ferrite	16	7*	1K-3K	5.7-6.7	*Test with network
2404H-1	Integral horn	Aluminum	Ferrite	8	7*	1K-3K	5.7-6.7	*Test with network
2405	Integral horn	Aluminum	Alnico	16	7*	1K-3K	5.7-6.7	*Test with network
2405H	Integral horn	Aluminum	Ferrite	16	7*	1K-3K	5.7-6.7	*Test with network
2410	1"	Aluminum	Alnico	16	3.5	550-1200	5.9-7.0	
2415	1"	Titanium	Ferrite	8	3	550-1200	3.5-4.3	Screw on mounting
2416	1"	Titanium	Ferrite	8	2.85	550-1200	2.9-3.5	Screw on mounting
2420	1"	Aluminum	Alnico	16	3.5	550-1200	5.9-7.0	
2421A	1"	Aluminum	Alnico	8	2.85	550-1200	2.9-3.5	
2421B	1"	Aluminum	Alnico	16	3.5	550-1200	5.9-7.0	
2425H	1"	Titanium	Ferrite	8	2.85	550-1200	2.9-3.5	
2425J	1"	Titanium	Ferrite	16	3.5	550-1200	5.9-7.0	
2426H	1"	Titanium	Ferrite	8	2.85	550-1200	2.9-3.5	Screw on/bolt on mounting
2426J	1"	Titanium	Ferrite	16	3.5	550-1200	5.9-7.0	Screw on/bolt on mounting
2427H	2"	Titanium	Ferrite	8	2.85	550-1200	2.9-3.5	Screw on/bolt on mounting
2427J	2"	Titanium	Ferrite	16	3.5	550-1200	5.9-7.0	Screw on/bolt on mounting
2440	2"	Aluminum	Alnico	16	3.5	350-1200	7.3-8.6	
2441	2"	Aluminum	Alnico	16	3.5	350-1200	7.3-8.6	

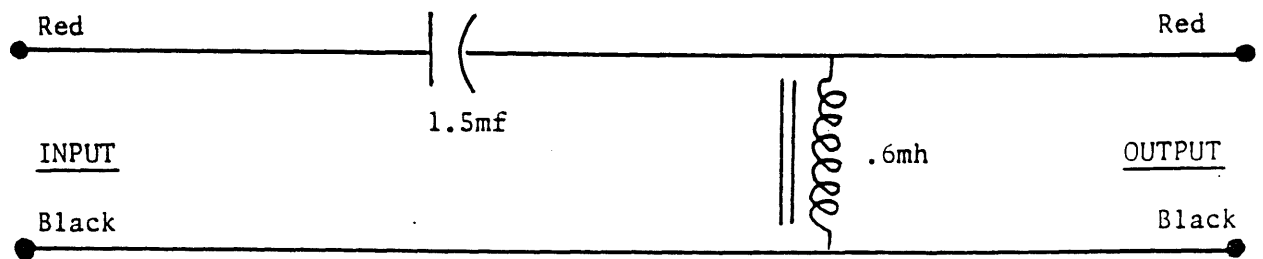
## HIGH FREQUENCY TRANSDUCER TEST SPECIFICATIONS

MODEL	TYPE OR	DIAPHRAGM	MAGNET	NOM	DYNAMIC TEST		DC RESISTANCE	NOTES
	THROAT SIZE	MATERIAL	TYPE	IMP SL	INPUT V	SWEEP FREQ HZ	MINIMUM-MAXIMUM	
2445J	2"	Titanium	Ferrite	16	3.5	350-1200	7.3-8.6	
2460	1"	Phenolic	Alnico	16	3.5	350-1200	6.0-7.0	
2461	1"	Phenolic	Alnico	16	5	350-1200	10.1-11.8	
2470	1"	Phenolic	Alnico	16	5	350-1200	10.1-11.8	
2475	1"	Phenolic	Alnico	16	5	350-1200	10.1-11.8	
2480	2"	Phenolic	Alnico	16	3.5	350-1200	5.8-6.9	
2482	2"	Phenolic	Alnico	16	5	350-1200	8.6-10.2	
2485J	2"	Phenolic	Ferrite	16	5	350-1200	8.6-10.2	
HL180	1"	Phenolic	Alnico	16	5	350-1200	10.1-11.8	
5A350	1"	Aluminum	Alnico	16	3.5	550-1200	5.9-7.0	OEM
5P350	1"	Phenolic	Alnico	16	3.5	350-1200	6.0-7.0	OEM
5A355	1"	Aluminum	Alnico	16	3.5	550-1200	5.7-7.0	OEM
5P355	1"	Phenolic	Alnico	16	5	350-1200	10.1-11.8	OEM
5A360	2"	Aluminum	Alnico	16	3.5	350-1200	7.3-8.6	OEM
5P360	2"	Phenolic	Alnico	16	5	350-1200	5.8-6.9	OEM
MI11419	1"	Aluminum	Alnico	16	3.5	550-1200	5.9-7.0	OEM
MI11426	2"	Phenolic	Alnico	16	5	350-1200	8.7-10.2	OEM
MI11426A	2"	Phenolic	Alnico	16	5	350-1200	8.7-10.2	OEM
MI11427	2"	Aluminum	Alnico	16	3.5	350-1200	7.3-8.6	OEM

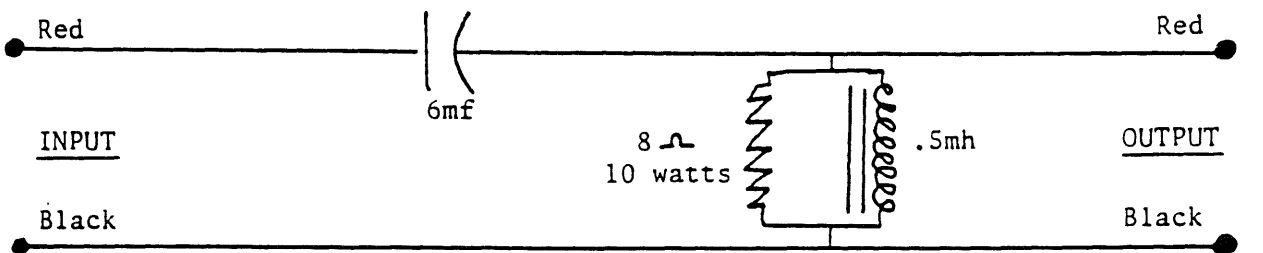
### HIGH FREQUENCY TEST NETWORK SCHEMATICS



034, 044, 066



2402.3.4.4-1.5



LF20'S